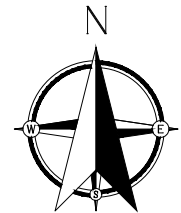
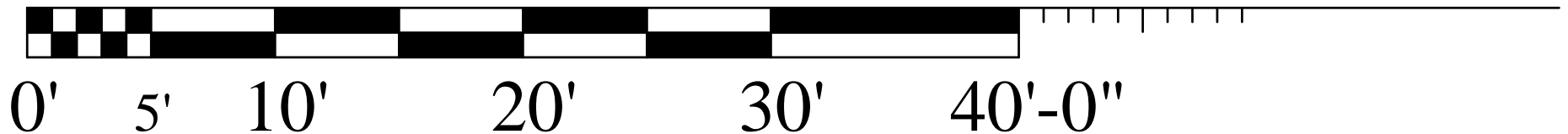
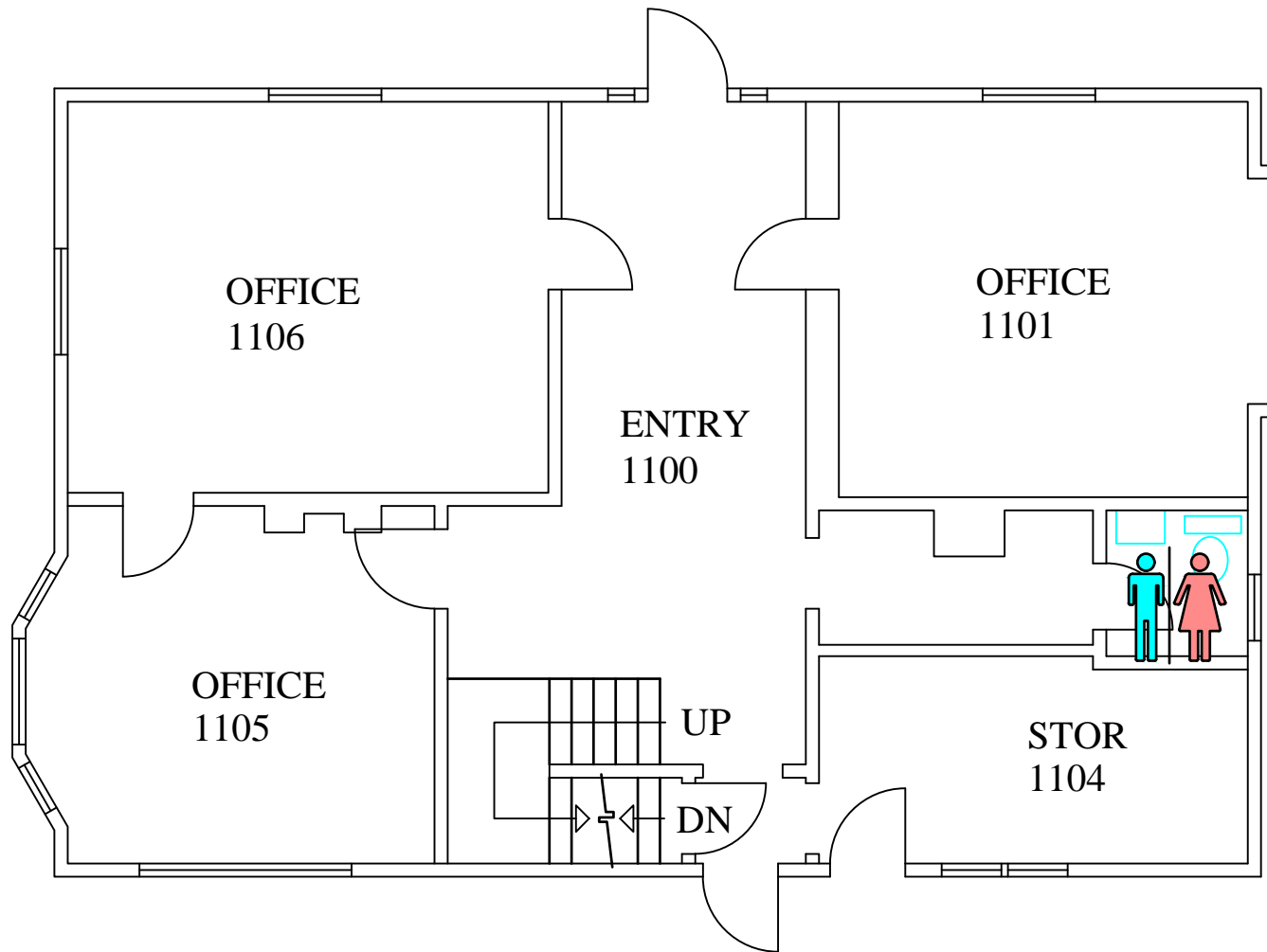


Lower Level



8289 Biomedical Sciences Offices

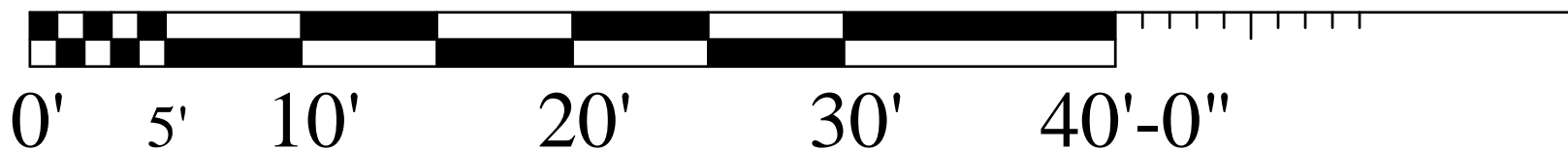


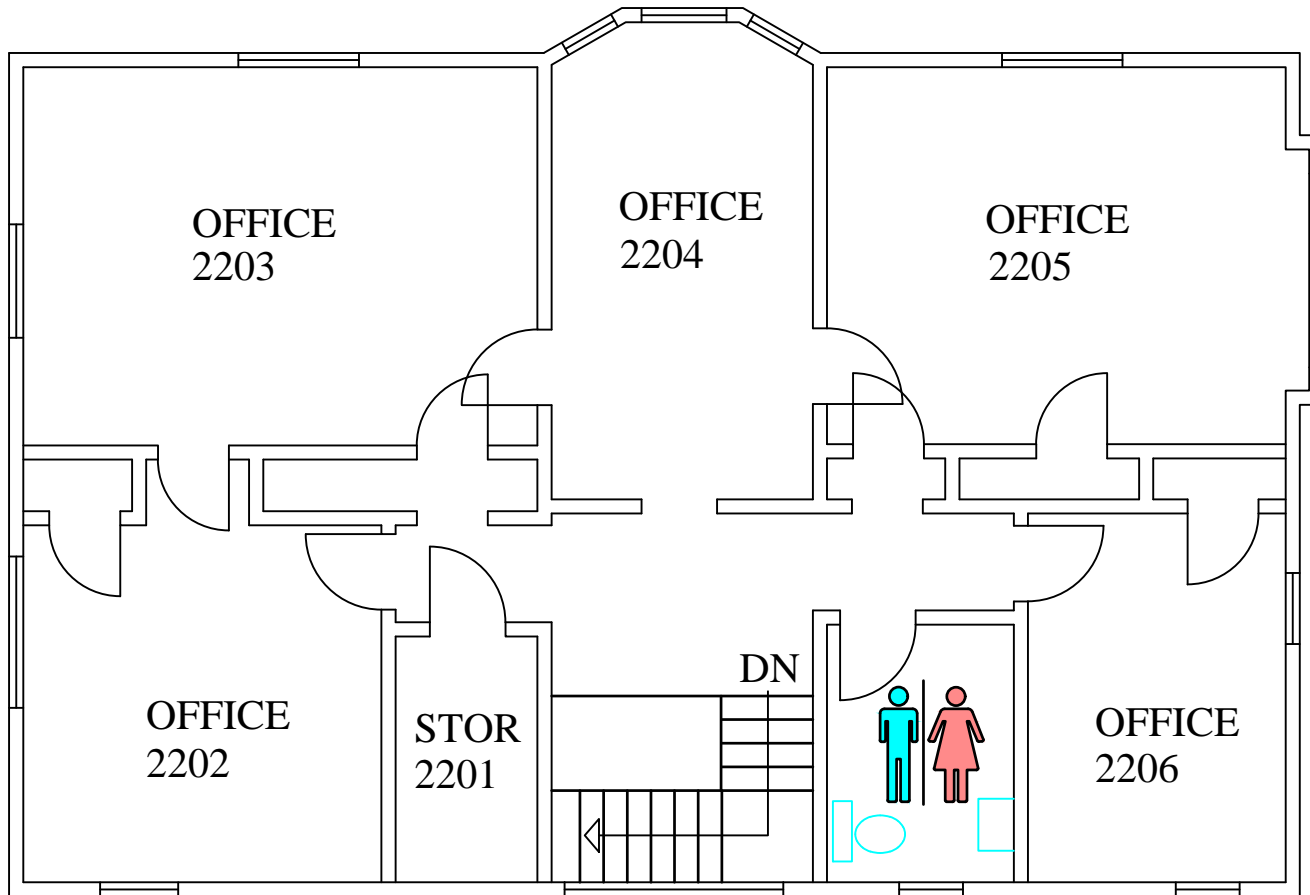


1st. Floor



8289 Biomedical Sciences Offices

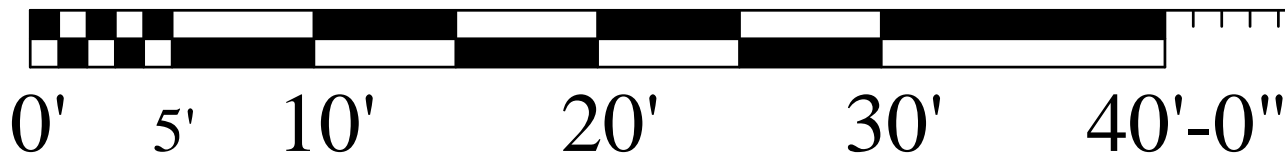




2nd. Floor

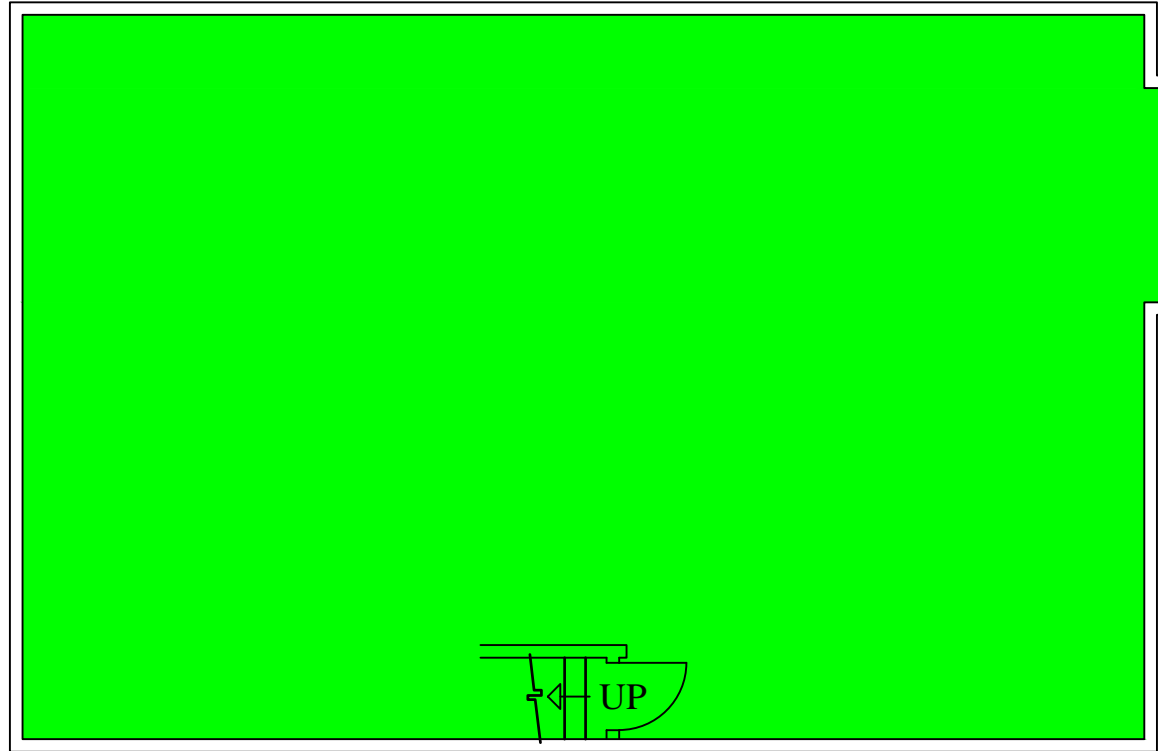


8289 Biomedical Sciences Offices



EMERGENCY STORM SHELTERS

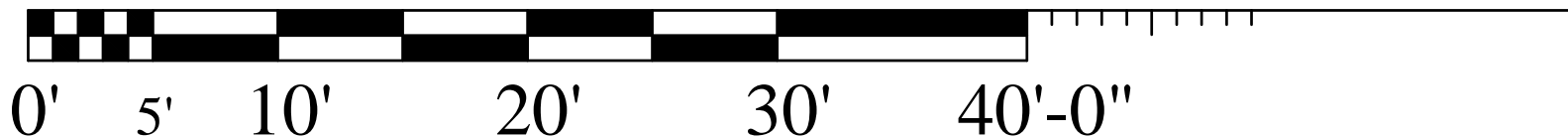
In event of a Tornado Warning everyone should go to the Lower Level **Primary Storm Shelter**



Lower Level

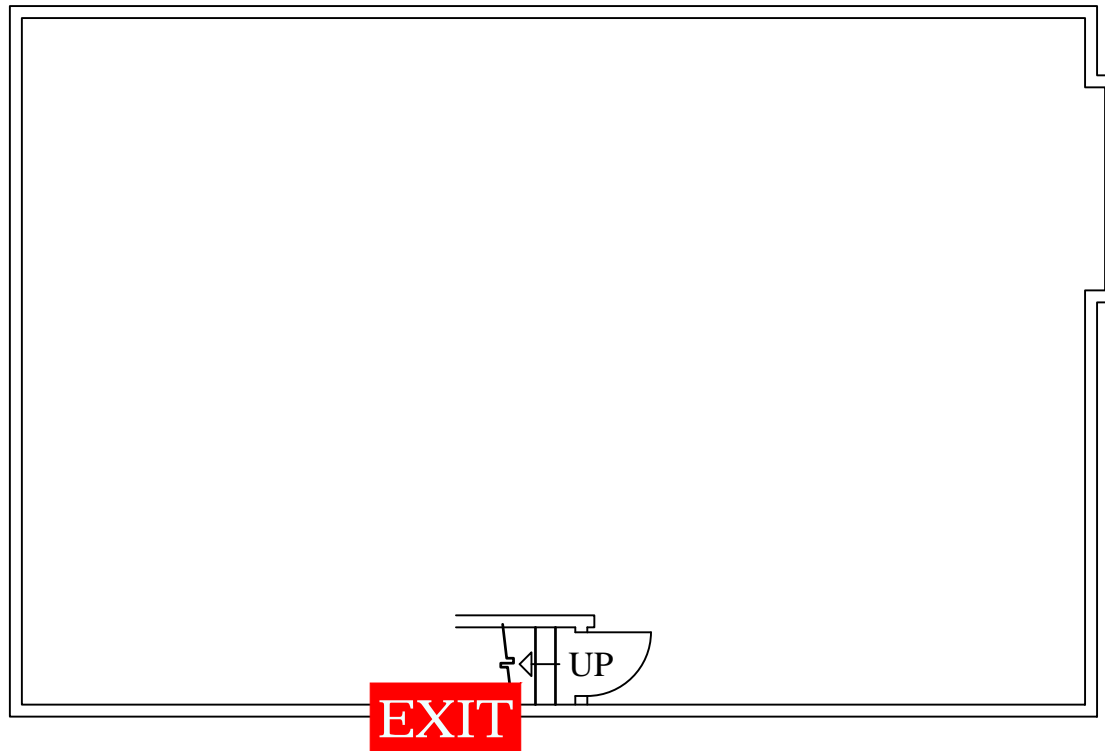


8289 Biomedical Sciences Offices



EMERGENCY EXIT PLAN

EXIT IN CASE OF EMERGENCY USE MARKED EXITS **EXIT**

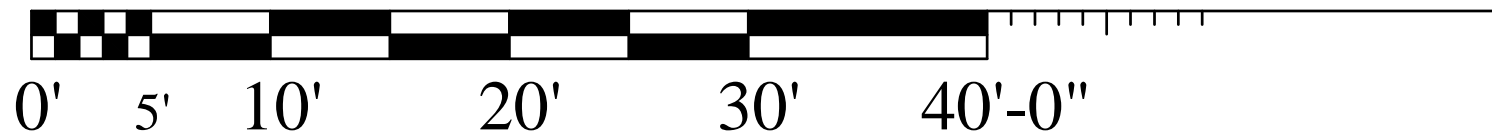


TO 1st FLOOR

Lower Level

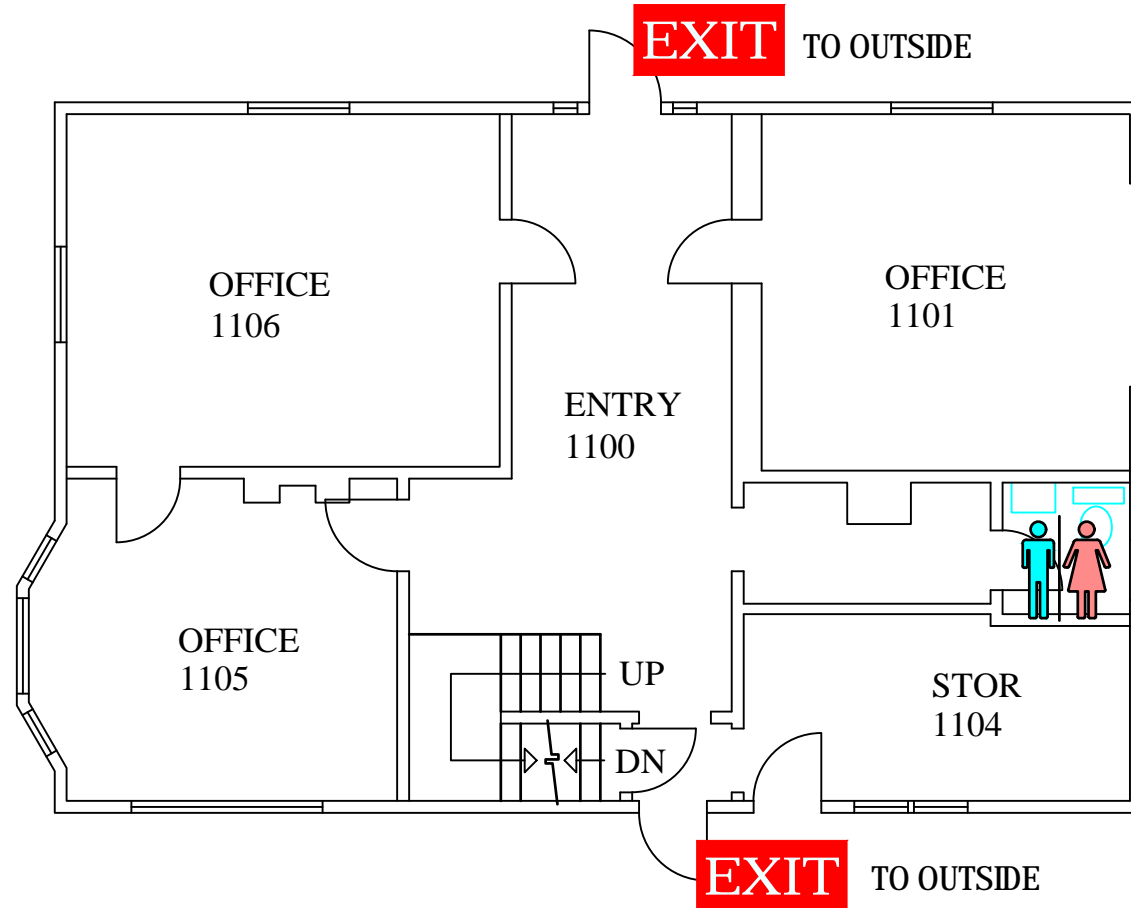


8289 Biomedical Sciences Offices



EMERGENCY EXIT PLAN

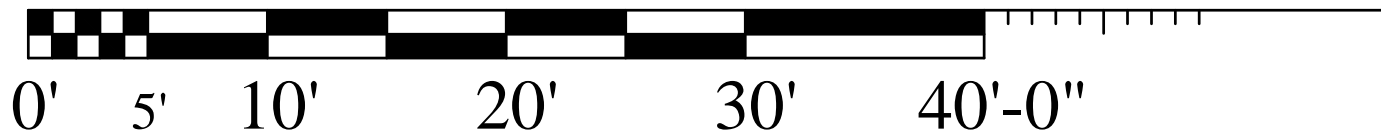
EXIT IN CASE OF EMERGENCY USE MARKED EXITS **EXIT**



1st. Floor

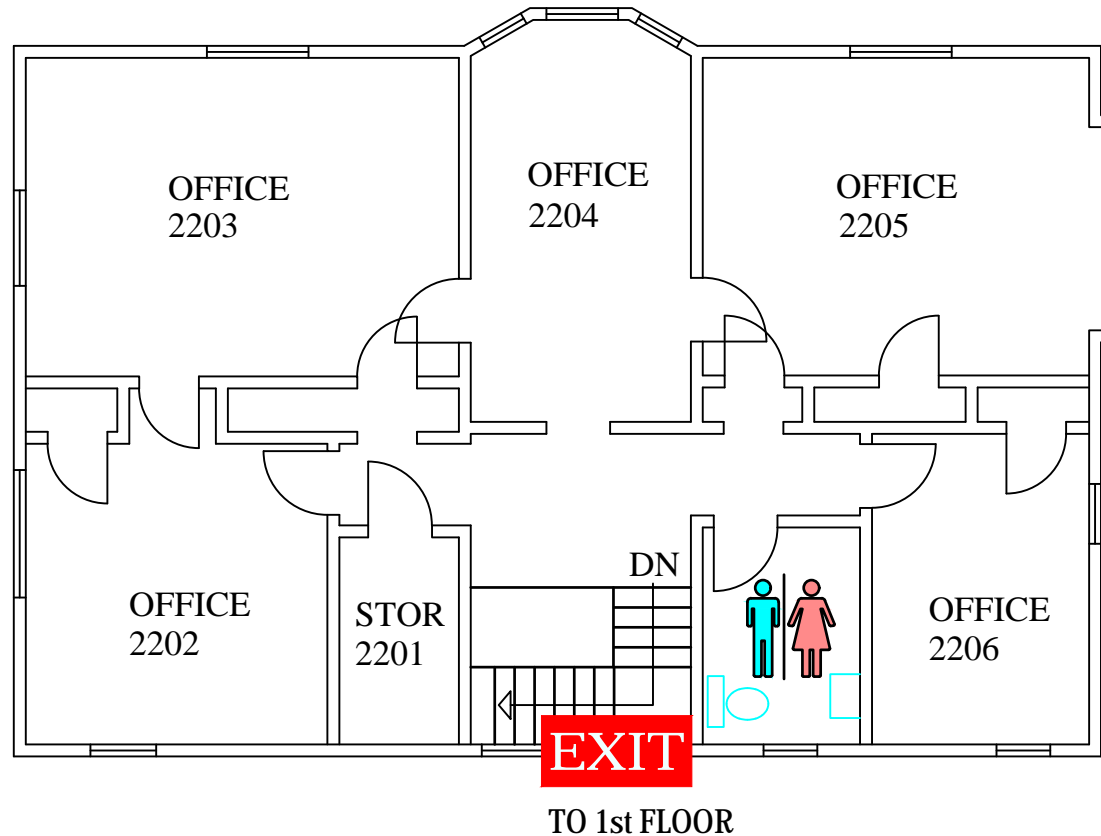


8289 Biomedical Sciences Offices



EMERGENCY EXIT PLAN

EXIT IN CASE OF EMERGENCY USE MARKED EXITS **EXIT**



2nd. Floor

8289 Biomedical Sciences Offices

