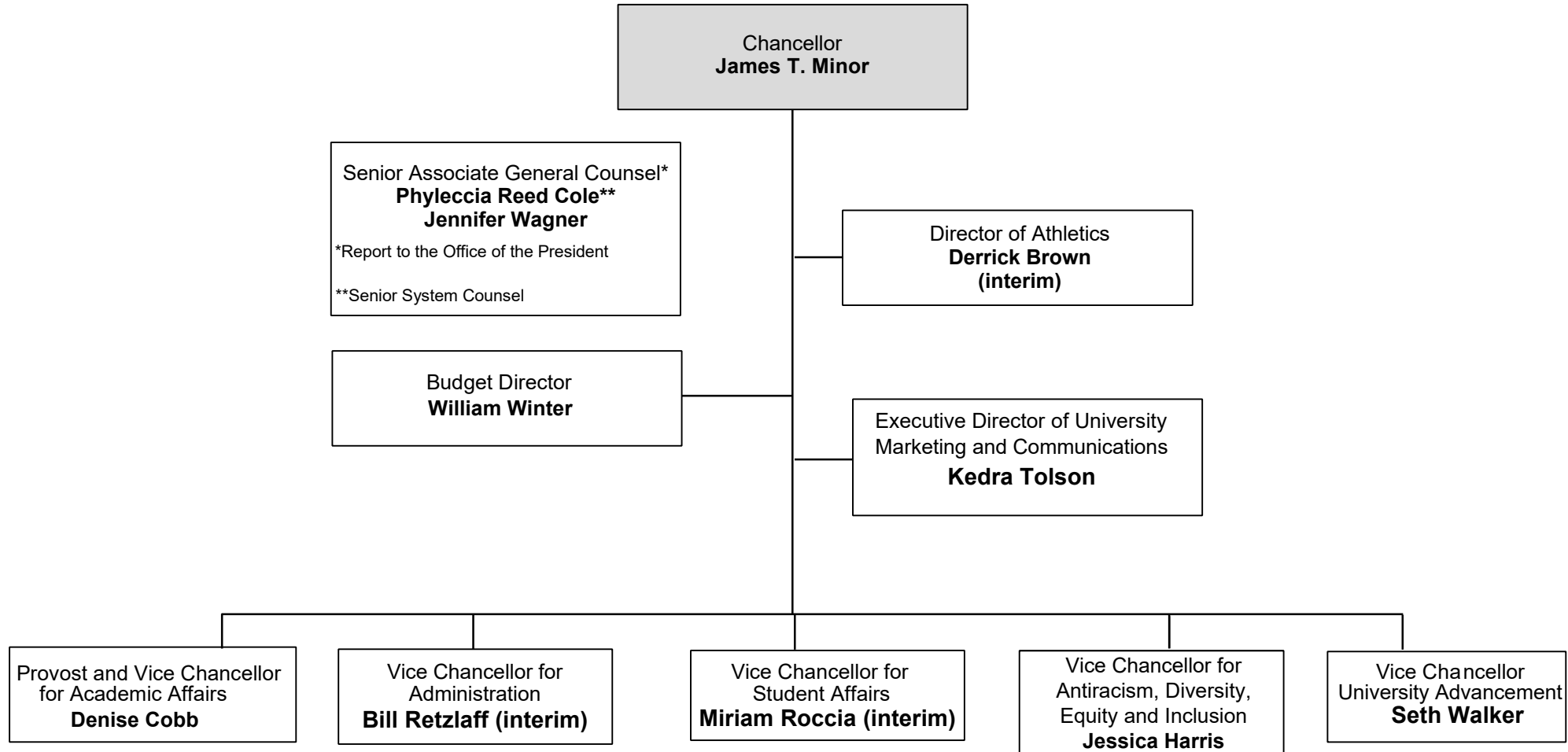


Southern Illinois University Edwardsville Organizational Chart



Provost and Vice Chancellor for
Academic Affairs
Denise Cobb

Associate Provost
Elza Ibroscheva

Assistant Provost
Vacant

Associate Vice Chancellor for
Enrollment Management
Scott Belobrajdic

Institutional Research and Studies
Phillip Brown

Office of International Affairs
Mary Weishaar

East St. Louis Center
Tim Staples

Honors Program
Jessica Hutchins (interim)

Associate Provost for Research
Jerry Weinberg

Coordinator for Policy, Communication
and Issues of Concern
Thomas Jordan

Assistant to the Provost for
Human Resources
Vacant

Assistant to the Provost for Library
and Community Engagement
Lydia Jackson

Director of Business Affairs
James Schram

Associate Vice Chancellor for
Information Technology and Chief
Information Officer
Steven Huffstutler

Directors
National Corn-to-Ethanol Research Center
John Caupert
Center for STEM Education, Research, and Outreach
Sharon Locke

Deans
College of Arts and Sciences
Kevin Leonard
School of Business
Timothy Schoenecker
School of Education, Health and Human Behavior
Robin Hughes
School of Engineering
Cem Karacal
School of Nursing
Judy Liesveld
School of Pharmacy
Mark Luer
Graduate School
Jerry Weinberg
School of Dental Medicine
Saulius Drukteinis
Library and Information Services
Eric Ruckh (interim)

Vice Chancellor
for Administration
Bill Retzlaff (interim)

Director of Planning
and Budgeting
Janet Haroian

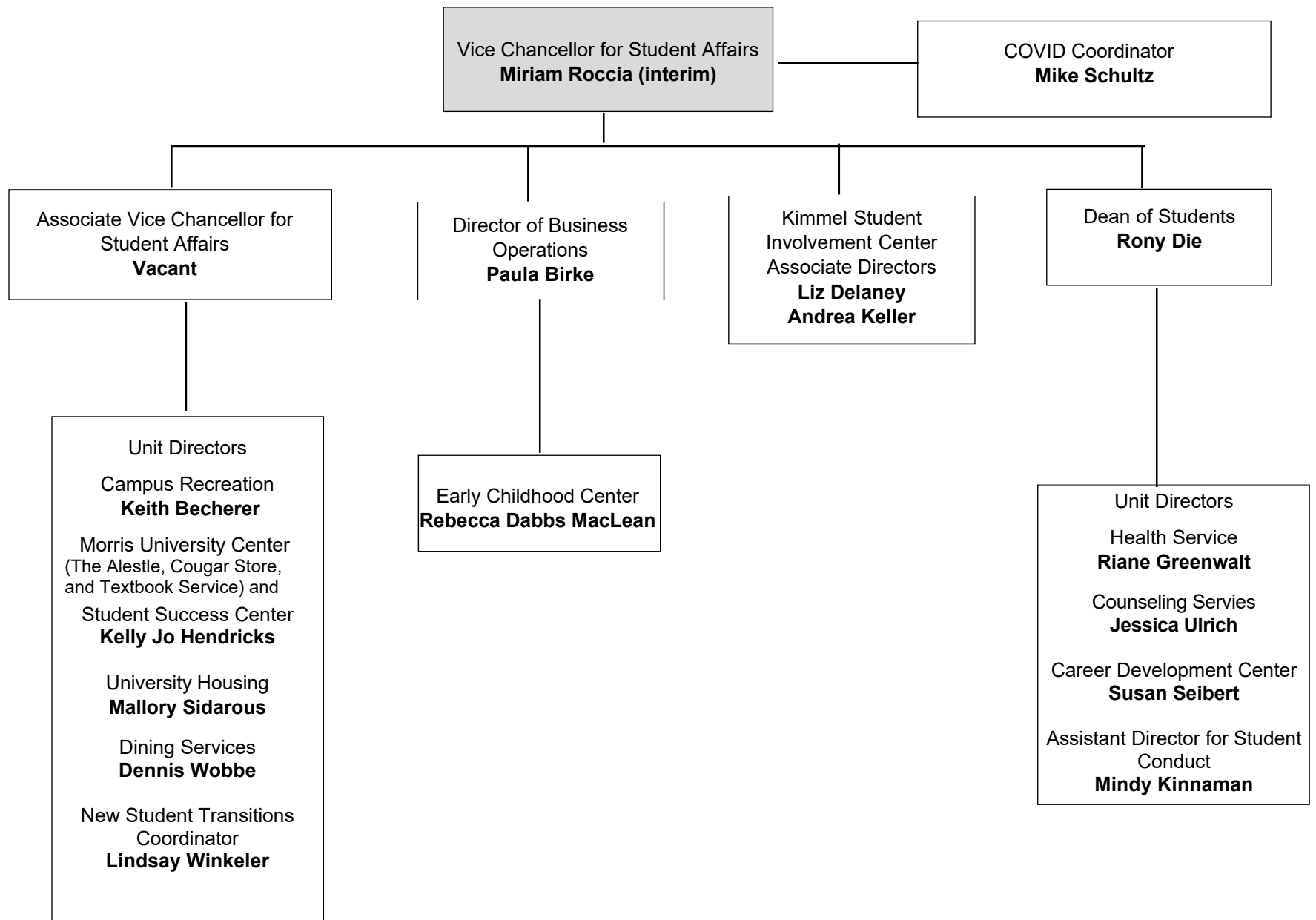
Administrative
Services
Robert Vanzo

Facilities
Management
Craig Holan

Financial Affairs
Richard Hampton

Human
Resources
Carl Chambers

University Police
**Justin Lieberman
(interim)**



Vice Chancellor for Antiracism,
Diversity, Equity and Inclusion
Jessica Harris

Equal Opportunity, Access and
Title IX Coordination
Jamie Ball

Accessible Campus
Community and Equitable
Student Support (ACCESS)
Dominic Dorsey

Student Opportunities, Equity,
Diversity, and Inclusion
Earleen Patterson

Inclusive Excellence,
Education and Development
Lindy Wagner

